

WELFARE FLOWCHART

Does someone require urgent medical attention?

Call for a **First Aider** from the **Porter's Lodge** on **01865 (2)70600**, or call **111** or an ambulance on **999** (notify the Porter's Lodge so that they can direct the ambulance).

Is someone experiencing significant mental health issues at this moment?

Contact the **Porter's Lodge** on **01865 (2)70600** and/or call the **Student Welfare Lead** on **01865 270525** (daytime) or **Student Welfare Advisor** on **07805 784964** (overnight/weekends)

Is someone experiencing a medical or mental health crisis that doesn't require immediate attention?

Contact one of the Welfare Staff listed in the green section to the right, or your GP Surgery. The **University Counselling Service** is also a free service for students (counselling@admin.ox.ac.uk)

Has someone been a victim of discrimination, harassment or a criminal offence?

Discrimination & Harassment: Inform one of the College Harassment Advisors
Dr Stephen Rayner (Senior Tutor)
Jo Ockwell (Student Welfare Lead)
Dr Graeme Smith (Physics Tutor) (graeme.smith@some.ox.ac.uk)
Criminal Offence: You are encouraged to contact **Thames Valley Police**. If this is not appropriate, please contact the **Student Welfare Lead** or **Student Welfare Advisor**.

Has someone been a victim of sexual violence or harassment?

If you need support, or advice on what to do next, contact the **Oxford Sexual Harassment and Violence Support Service** (ox.ac.uk/students/welfare/supportservice)

Is someone experiencing financial hardship?

Contact the College Accountant, **Damian Clements** (college.accountant@some.ox.ac.uk)

Is someone experiencing stress or anxiety not related to any of the above?

Contact any of the people or organisations in the blue or green sections of this poster. You can also speak to your **Personal Tutor** (all students are sent an email at the start of the year regarding who their Personal Tutor is).

EXTERNAL SUPPORT

Accident and Emergency

John Radcliffe Hospital, Headley Way, Headington, Oxford

College Doctors

Call 01865 429993
Observatory Medical Practice, Jericho Health Centre

Samaritans

Call 116 123
oxfordshiremind.org.uk/support-for-you/safe-haven/

Nightline Association

Call 01865 270270
oxford.nightline.ac.uk/

Papyrus – Prevention of Youth Suicide

Call 0800 068 4141
papyrus-uk.org/

Oxfordshire Sexual Abuse and Rape Crisis Support

Survivorspace.org.uk
solacesarc.org.uk/

COLLEGE WELFARE TEAM



Jo Ockwell, Student Welfare Lead
House 4, 01865 270525
Jo.ockwell@some.ox.ac.uk
Mon-Thurs 9:30-4:30pm



Steve Rayner, Senior Tutor
House 6, 01865 270629
senior.tutor@some.ox.ac.uk
Tues-Fri 9am-5pm



Jenny Fitzgerald, College Nurse
Darbs 16, 01865 270608
pml.somervillennurse@nhs.net
Mon-Fri 9am-3pm



Elizabeth Edginton, College Counsellor
college.counsellor@some.ox.ac.uk
Tuesdays 8am-4pm

7pm-7am and all weekend

Student Welfare Advisors:
Call 07805 784964



Jerry



Chibuzor

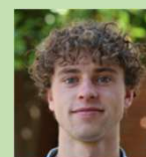


Jess

All members of Somerville's Welfare Team work within the Somerville College – Confidentiality Policy, available at some.ox.ac.uk/about/policies-finance-college-policies/

JCR WELFARE

JCR Welfare Officers:
message them on Facebook with questions or concerns



Finch Ward



Kaia Cochran

Somerville also has a great team of **Peer Supporters** who are here to answer any questions or talk through any worries that you may have. Find their information on the posters around college

