

# Student Welfare (Daytime) – A Quick Guide for Tutors

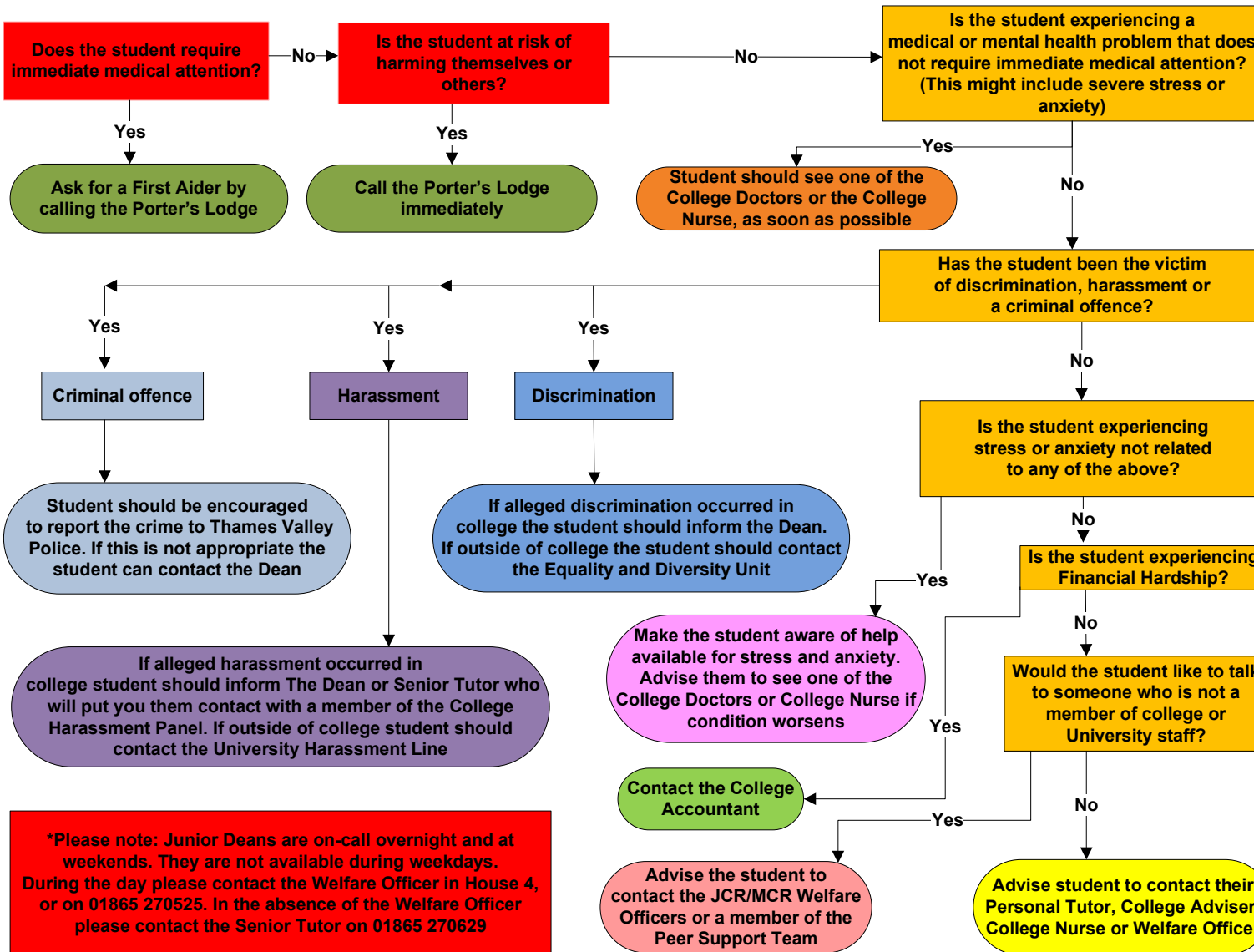
In all cases; If you are not sure or if the problem is likely to impact upon the student's examinations, submissions or exam revision

Inform the Welfare Officer on 70525 or email [academic.office@some.ox.ac.uk](mailto:academic.office@some.ox.ac.uk)

If the student is currently under Academic Discipline or the issue is of a very serious nature

Inform the Senior Tutor on 70629 or email [senior.tutor@some.ox.ac.uk](mailto:senior.tutor@some.ox.ac.uk)

## START



\*Please note: Junior Deans are on-call overnight and at weekends. They are not available during weekdays. During the day please contact the Welfare Officer in House 4, or on 01865 270525. In the absence of the Welfare Officer please contact the Senior Tutor on 01865 270629

Porter's Lodge – 01865 270600 (70600)

Jericho Health Centre, New Radcliffe House, Walton Street, Oxford OX2 6NW. Call 01865 429993 for appointments from 8:30-18:00 Monday to Friday

Rachel Slater (College Nurse) (Somerville - Darbshire 16)  
See the notice on her door, or the email circulated to all students, for times Glenys will be available.

The Dean – [deans.office@some.ox.ac.uk](mailto:deans.office@some.ox.ac.uk)  
Equality and Diversity unit – [www.admin.ox.ac.uk/eop](http://www.admin.ox.ac.uk/eop)

The Dean – [deans.office@some.ox.ac.uk](mailto:deans.office@some.ox.ac.uk)  
The Senior Tutor – [senior.tutor@some.ox.ac.uk](mailto:senior.tutor@some.ox.ac.uk)  
University Harassment Line – 01865 270760 or [harassment.line@admin.ox.ac.uk](mailto:harassment.line@admin.ox.ac.uk)

Thames Valley Police Non-Emergency Number - 101  
The Dean – [dean@some.ox.ac.uk](mailto:dean@some.ox.ac.uk)

Help available for stress and anxiety  
Student Counselling Service: [www.ox.ac.uk/students/welfare/counselling](http://www.ox.ac.uk/students/welfare/counselling)  
College Counsellor: [college.counsellor@some.ox.ac.uk](mailto:college.counsellor@some.ox.ac.uk)  
OSUS Student Advice Service: [osusu.org/advice/student-advice-service](http://osusu.org/advice/student-advice-service)  
Somerville Peer Supporters:  
[blogs.some.ox.ac.uk/jcr/peer-support/peersupport@some.ox.ac.uk](http://blogs.some.ox.ac.uk/jcr/peer-support/peersupport@some.ox.ac.uk)  
Nightline: [users.ox.ac.uk/~nightln/](http://users.ox.ac.uk/~nightln/)

College Accountant – Elaine Boorman – 01865 270636 or [college.accountant@some.ox.ac.uk](mailto:college.accountant@some.ox.ac.uk)

JCR Welfare Officers: [blogs.some.ox.ac.uk/jcr/jcr-2/committee/](http://blogs.some.ox.ac.uk/jcr/jcr-2/committee/)  
MCR Welfare Officers: [blogs.some.ox.ac.uk/mcr/committee/](http://blogs.some.ox.ac.uk/mcr/committee/)  
Peer Supporters: [blogs.some.ox.ac.uk/jcr/peer-support/peersupport@some.ox.ac.uk](http://blogs.some.ox.ac.uk/jcr/peer-support/peersupport@some.ox.ac.uk)

All students are sent an email at the start of the academic year informing them of who their Personal Tutor or College Adviser is. If they aren't sure please ask the Academic Office, [academic.office@some.ox.ac.uk](mailto:academic.office@some.ox.ac.uk)  
Rachel Slater (College Nurse) – [SomervilleNurse@oxfordhealth.nhs.uk](mailto:SomervilleNurse@oxfordhealth.nhs.uk) [somenurse@nhs.net](mailto:somenurse@nhs.net)  
Jo Ockwell (Welfare Officer) – [Welfare.officer@some.ox.ac.uk](mailto:Welfare.officer@some.ox.ac.uk) or 01865 270525