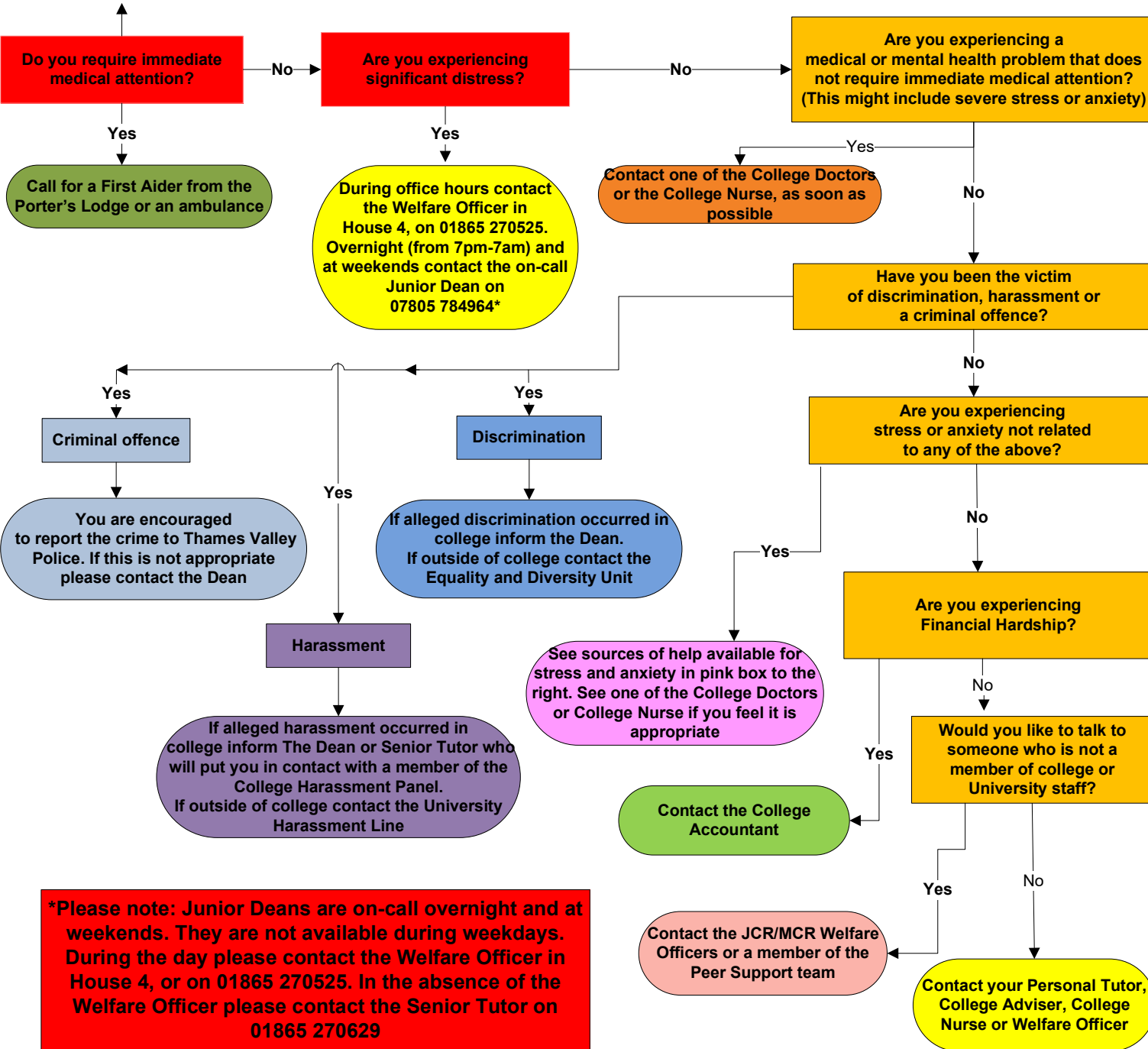


Welfare Support – A Guide for Students

START



Porter's Lodge – 01865 270600

Jericho Health Centre, New Radcliffe House, Walton Street, Oxford OX2 6NW. Call 01865 429993 for appointments from 8:30-18:00 Monday to Friday.

Glenys Knighton (College Nurse) (Somerville - Darbshire 16)
See the notice on her door, or the email circulated to all students, for times Glenys will be available.

The Dean – deans.office@some.ox.ac.uk
Equality and Diversity unit – www.admin.ox.ac.uk/eop

The Dean – deans.office@some.ox.ac.uk
The Senior Tutor – senior.tutor@some.ox.ac.uk
University Harassment Line – 01865 270760 or harassment.line@admin.ox.ac.uk

Thames Valley Police Non-Emergency Number - 101
The Dean – dean@some.ox.ac.uk

Help available for stress and anxiety
Student Counselling Service: www.ox.ac.uk/students/welfare/counselling
College Counsellor: sophie.lopez-welsch@admin.ox.ac.uk
OSUS Student Advice Service: ousu.org/advice/student-advice-service
Somerville Peer Supporters: blogs.some.ox.ac.uk/jcr/peer-support/peersupport@some.ox.ac.uk
Nightline: users.ox.ac.uk/~nightln/

College Accountant – Elaine Boorman – 01865 270636 or college.accountant@some.ox.ac.uk

JCR Welfare Officers: blogs.some.ox.ac.uk/jcr/jcr-2/committee/
MCR Welfare Officers: blogs.some.ox.ac.uk/mcr/committee/
Peer Supporters: blogs.some.ox.ac.uk/jcr/peer-support/; peersupport@some.ox.ac.uk

All students are sent an email at the start of the academic year informing them of who their Personal Tutor or College Adviser is. If you aren't sure please ask the Academic Office, academic.office@some.ox.ac.uk
Glenys Knighton (College Nurse) – somenurse@nhs.net
Jo Ockwell (Welfare Officer) – jo.ockwell@some.ox.ac.uk or 01865 270525