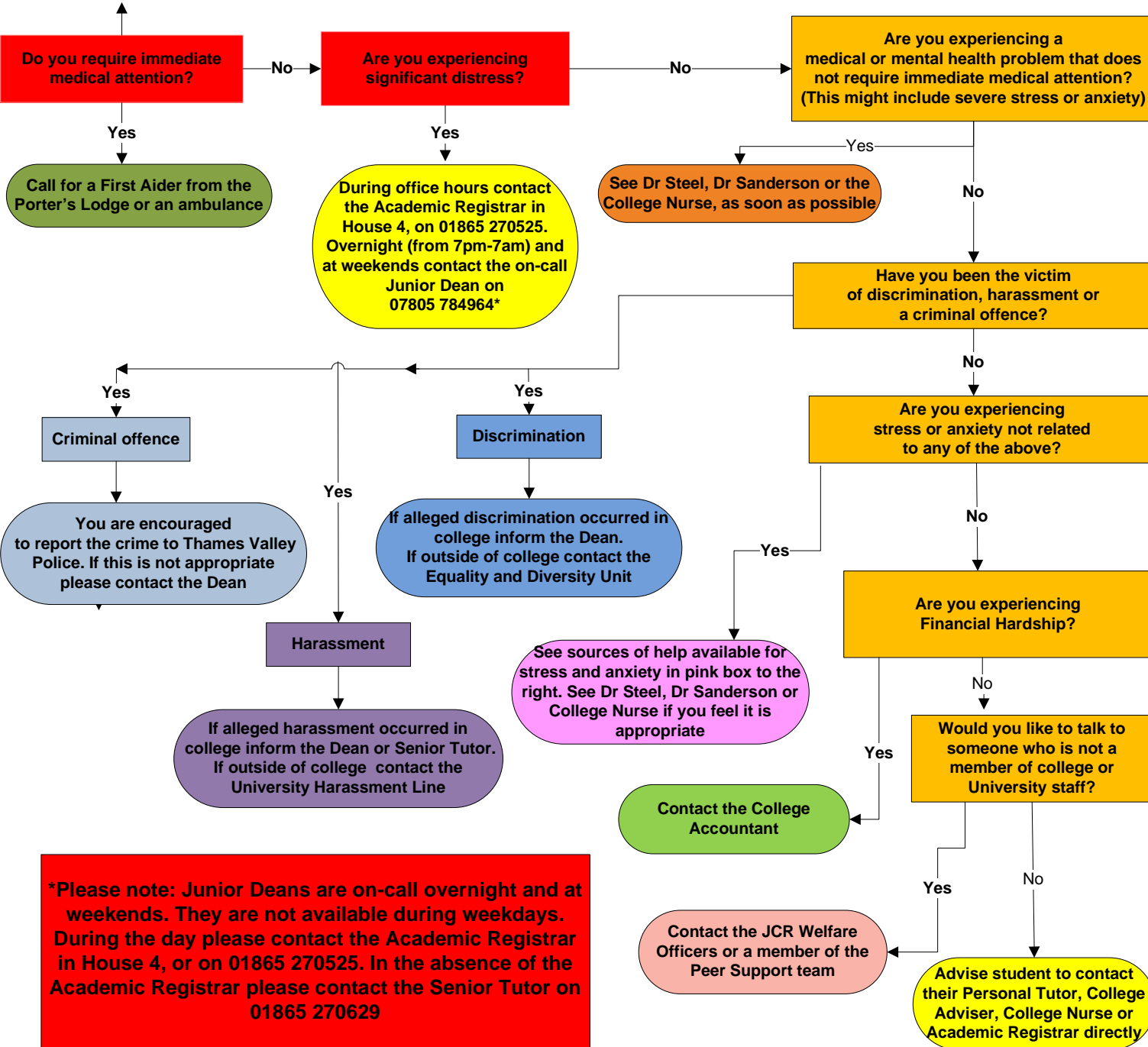


# Welfare Support – A Guide for Students

**START**



Porter's Lodge – 01865 270525

Dr Steel and Dr Sanderson, Jericho Health Centre, New Radcliffe House, Walton Street, Oxford OX2 6NW. Call 01865 429993 for appointments from 8:30-18:00 Monday to Friday  
Lynn Cross (College Nurse) (Somerville - Darbshire 16)  
Monday – 10:00-12:30 and 13:00-14.30  
Tuesday – 10:00-12:30 and 13:00-14.30  
Wednesday – 13:00-16:00  
Thursday – 10:00-12:30 and 13:00-14.30  
Friday – 10:00-12:30 and 13:00-14.30

The Dean – deans.office@some.ox.ac.uk  
Equality and Diversity unit – <http://www.admin.ox.ac.uk/eop>

The Dean – deans.office@some.ox.ac.uk  
The Senior Tutor – senior.tutor@some.ox.ac.uk  
University Harassment Line – 01865 270760 or harassment.line@admin.ox.ac.uk

Thames Valley Police Non-Emergency Number - 101  
The Dean – dean@some.ox.ac.uk

Help available for stress and anxiety  
Student Counselling Service: <http://www.ox.ac.uk/students/welfare/counselling>  
OSUS Student Advice Service: [ousu.org/advice/student-advice-service](http://ousu.org/advice/student-advice-service)  
Somerville Peer Supporters: <http://blogs.some.ox.ac.uk/jcr/peer-support/>  
Nightline: [users.ox.ac.uk/~nightln/](http://users.ox.ac.uk/~nightln/)

College Accountant – Elaine Boorman – 01865 270636 or [elaine.boorman@some.ox.ac.uk](mailto:elaine.boorman@some.ox.ac.uk)

JCR Welfare Officers: <http://blogs.some.ox.ac.uk/jcr/jcr-2/committee/>  
MCR Welfare Officers: <http://blogs.some.ox.ac.uk/mcr/committee/>  
Peer Supporters: <http://blogs.some.ox.ac.uk/jcr/peer-support/>

All students are sent an email at the start of the academic year informing them of who their Personal Tutor or College Adviser is. If you aren't sure please ask the Academic Office, [academic.office@some.ox.ac.uk](mailto:academic.office@some.ox.ac.uk)  
Lynn Cross (College Nurse) – [lynn.cross@some.ox.ac.uk](mailto:lynn.cross@some.ox.ac.uk)  
Jo Ockwell (Academic Registrar) – [jo.ockwell@some.ox.ac.uk](mailto:jo.ockwell@some.ox.ac.uk) or 01865 270525