

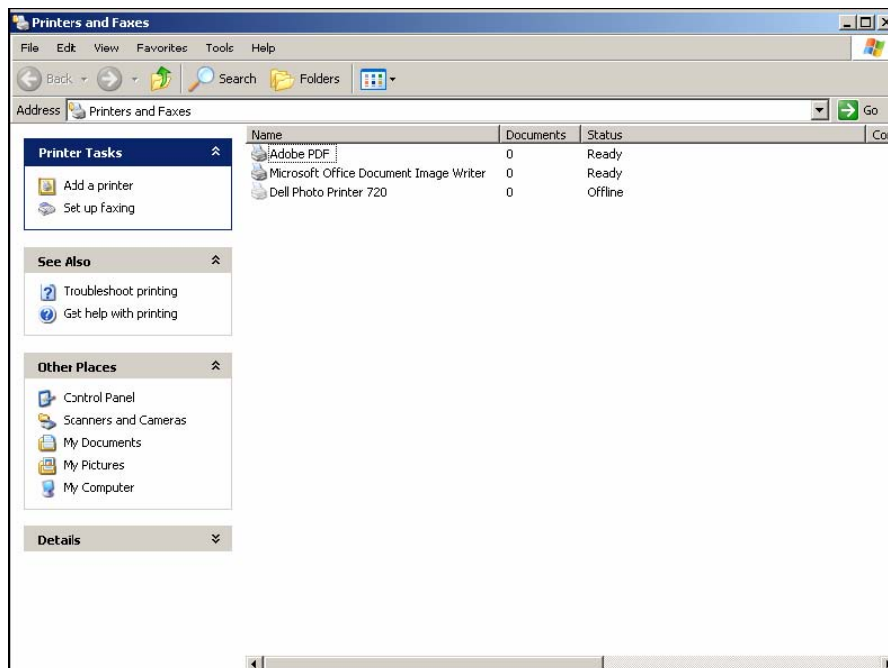


How to Install Network Printers on Windows XP

Click on Start and Printers and Faxes



Select Add a Printer from left hand-side menu



Click on Next

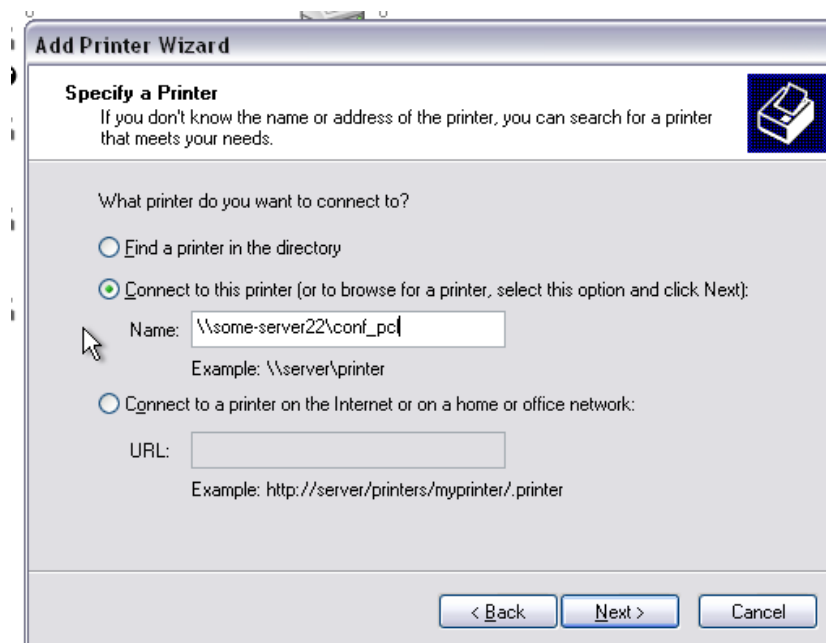


Select Network Printer and click Next





Select Connect to this printer, as shown in the image below



Make sure that the printer path you use is:

For Students & All Academic staff:

```
\\some-server22\palmer_pcl
\\some-server22\palmer_ps
\\some-server22\library_pcl
\\some-server22\library_ps
\\some-server22\student_colour_pcl
\\some_server22\student_colour_ps
\\some-server22\banister_pcl
\\some-server22\banister_ps
\\some-server22\mcr_pcl
\\some-server22\mcr_ps
```

For Fellows:

```
\\some-server22\fellows_pcl
\\some-server22\fellows_ps
```

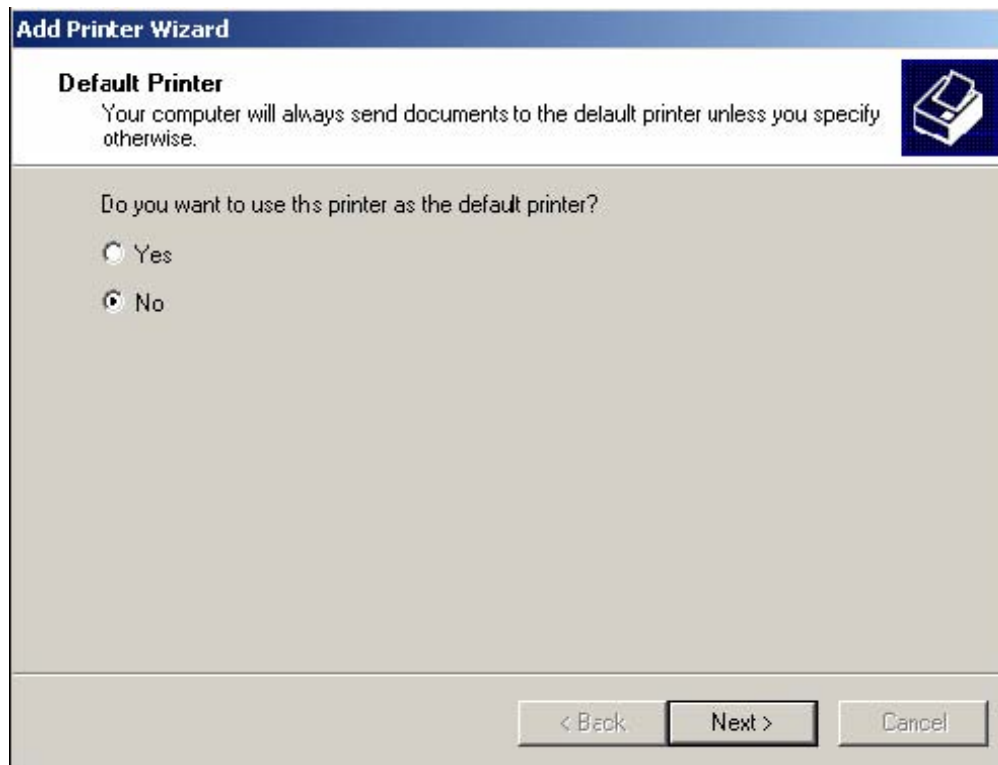
For Conference guests only, by arrangement:

```
\\some-server22\conf_pcl
```



If you are asked for a username and password use your college/websense credentials, but put some2k\ in front of the username. For example: some2k\smithj-05

Once the printer is selected, click on Next.



Select yes or no, depending whether you want the printer to become the default printer or not. Click Next to finish the Wizard.

You can change the default printer by right-clicking with your mouse on any printer installed and clicking on Set as Default Printer.

